

FULL-SIZE BLAZER

1989 CHEVY TRUCKS



THE *Heartbeat* OF AMERICA  TODAY'S CHEVY TRUCK™

1989 FULL-SIZE BLAZER

America's original 4x4 full-size sport utility is as rugged, stylish and adventurous as ever. The Chevrolet® Full-Size Blazer™ for 1989 has a beautifully restyled grille and restyled body-side moldings, plus a richer exterior finish, thanks to a new base-coat/clear-coat paint process.

Chevy™ Blazer's rugged four-wheel-drive system, big powerplant and high clearance let you get away from it all. Blazer's superb

styling lets you look good on your way to the great outdoors. And Blazer's people-pampering interior lets you take a lot of civilization along for the ride.

Up to five people fit comfortably in Blazer, when the optional second seat is ordered. Blazer's standard payload capacity is 1000 lbs., including passengers, equipment and cargo — and cargo can be easily loaded through Blazer's wagon-style tailgate.

Blazer is also no slouch when it comes

to trailering: a properly equipped Blazer can move up to 12,000 lbs., including vehicle, trailer, people, equipment and cargo.

You have your choice of two models: a powerful 5.7 Liter gasoline V8 with Electronic Fuel Injection or a 6.2 Liter diesel V8. Both Blazer models have standard power brakes, power steering and steel-belted radial tires. Both models can also be ordered with the standard Scottsdale or up-level Silverado trim package.

STANDARD EQUIPMENT

Standard Interior

- Armrests: On RH and LH door, padded.
- Cigarette Lighter.
- Dome Lamps: Two, with door-operated switches.
- Door Trim Panels: Color-keyed.
- Floor Covering: Black rubber floor mats.
- Gages and Switches:
Gages — Speedometer, trip odometer, oil pressure, engine temperature, voltmeter and fuel. Switches — Lights, for interior, exterior and instrument panel. On steering column for direction signals, headlamp low/high beam and windshield washers/wipers, hazard warning. Heater fan and ignition with key-in warning buzzer.
- Heater/Defogger: Heavy-duty, outside-air-type.
- Inside-Hood Lock Release.
- Insulation and Sound-Deadening Material: On dash panel, under floor mats and on roof panels.
- Lights: Instrument cluster, cab interior and dome.
- Mirror, Rearview: 10" prismatic.
- Radio: AM, electronically tuned, with mast antenna.
- Safety Belts: All seating positions; includes shoulder belts in outboard seating positions.
- Seats: Foam-padded, high-back driver and passenger with Custom Vinyl trim.
- Spare Tire Carrier: On RH rear panel.
- Stowage Box: RH side of instrument panel, with key lock.
- Tools: Mechanical jack and wheel wrench.
- Warning Lights: Safety belt, parking brake, direction/hazard signal and high beam.

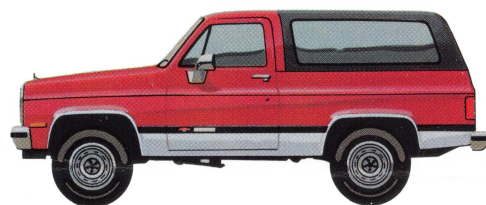
Standard Exterior

- Bumpers: Front and rear, chromed.
- Fuel Tank: 31-gal. (gasoline); 32-gal. (diesel).
- Glass: Tinted, all windows.
- Grille: Rustproof, painted argent.
- Horn: Dual electric, low- and high-note.
- Hubcaps: Bright metal/black trim.
- Lights: Backup lamps integral with tail lamps. Two rectangular headlamps, plus front and rear direction and parking lamps.
- Mirrors: RH and LH, Below Eyeline, painted black.
- Removable Top: Molded plastic reinforced with fiberglass.
- Tailgate: Double-wall construction with reel-type cables. Includes roll-down glass and key lock.
- Windshield Wipers and Washers: Electric, two-speed.

EXTERIOR TRIMS

Scottsdale. Front and rear chromed bumpers, tinted glass in all windows, light argent grille, bright metal hubcaps, painted silver wheels.

Silverado. Chrome trim on grille, dual quad halogen headlamps, rub strip on rear bumper, bright accent on front bumper rub strip and black body-side moldings, bright wheel-opening moldings, full wheel covers.



Blazer Silverado with optional Rally Wheels and optional Conventional Two-Tone.



Full-Size Blazer interior with optional Silverado trim.

Shown on front cover: Full-Size Blazer with optional Silverado trim and other options. Tires supplied by various manufacturers.

INTERIOR TRIMS

Scottsdale. High-back front bucket seats with Custom Vinyl trim (an optional rear bench seat in matching trim expands seating to five); AM radio; embossed black rubber floor mats in front and rear seat areas; full-length, color-keyed plastic headliner.

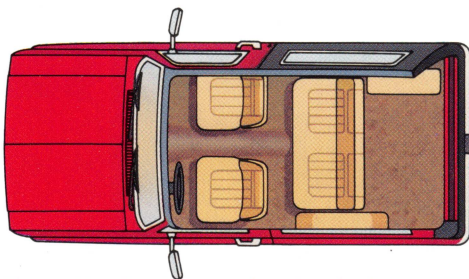


Custom Vinyl high-back bucket seats: standard in Scottsdale (reclining version standard in Silverado, optional in Scottsdale).

Silverado. High-back reclining front bucket seats with choice of Custom Vinyl or Custom Cloth trim; color-keyed carpeting; foam-backed cloth headliner; extra insulation in floor, color-keyed door trim panels and headliner; power door locks; headlamps-on warning buzzer; Custom steering wheel; black vinyl spare tire cover; electric tailgate window; door-closing assist straps; center console with storage and beverage pockets.



Custom Cloth reclining high-back bucket seats: optional in Silverado, not available in Scottsdale.



Blazer with optional rear bench seat carries five people, and the bench seat-back folds down to create almost five linear feet of cargo space.

APPEARANCE AND CONVENIENCE OPTIONS

- Air Conditioning
- Bumpers: Chromed Front Bumper Guards, Deluxe Front and Rear
- Comfortilt Steering Wheel
- Deluxe Front Appearance Group (includes Halogen Headlamps)
- Electric Quartz Clock
- Glass, Sliding Rear Side Windows
- Headliner: Cloth (included in Silverado)
- Intermittent Windshield Wipers
- Mirrors: Stainless Steel Below Eyeline
- Operating Convenience Package (Power Door Locks and Power Windows)
- Paint Options: Conventional Two-Tone, Deluxe Two-Tone, Special Two-Tone
- Radio Equipment, Delco: ETR™ Electronically Tuned AM/FM Stereo Radio; ETR AM/FM Stereo Radio w/Seek and Scan and Digital Clock; ETR AM/FM Stereo Radio w/Seek and Scan, Stereo Cassette Tape Player and Digital Clock; ETR AM Stereo*/FM Stereo Radio w/Seek and Scan, Stereo Cassette Tape Player w/Search and Repeat, Graphic Equalizer and Digital Clock
- Seat, Folding Rear

- Tailgate, Electric Window
- Wheel Covers, Bright Metal
- Wheels: Aluminum, Rally.

*Receives C-Quam® AM stereo broadcasts. Most AM stereo stations across the country broadcast in C-Quam but some do not. Check with your local stations for compatibility in your area.

PERFORMANCE / HEAVY-DUTY EQUIPMENT OPTIONS

| | | |
|---|---|---|
| Automatic Locking Front Hubs | ■ | ■ |
| Battery, Heavy-Duty | ■ | |
| Cold Climate Package | ■ | |
| Deadweight Trailer Hitch | ■ | ■ |
| Electronic Speed Control | ■ | ■ |
| Engine Oil Cooler | ■ | |
| Front Quad Shocks | ■ | ■ |
| Front Springs, Heavy-Duty | ■ | ■ |
| Front Tow Hooks | ■ | ■ |
| Fuel Tank, Stone Shield Plate | ■ | ■ |
| Limited-Slip Rear Axle Differential | ■ | ■ |
| Radiator, Heavy-Duty | ■ | |
| Trailering Special Equipment | ■ | ■ |
| Trailer Wiring Harness | ■ | ■ |
| Transmission Oil Cooler and Heavy-Duty Radiator | ■ | ■ |
| Weight-Distributing Hitch Platform | ■ | ■ |

■ Gas. ■ Diesel.

ENGINE SPECIFICATIONS

| Series | 4-Wheel-Drive Gas | 4-Wheel-Drive Diesel |
|--------------------------------|--------------------|----------------------|
| Displacement — Liter (cu. in.) | 5.7 (350) V8 w/EFI | 6.2 (379) V8 Diesel |
| Engine Ordering Code | LO5(A) | LH6 |
| Bore & Stroke (in.) | 4.0 x 3.48 | 3.98 x 3.82 |
| Compression Ratio | 9.3 to 1 | 21.3 to 1 |
| SAE Net Horsepower @ RPM | 210 @ 4000 | 130 @ 3600* |
| SAE Net Torque (lb.-ft.) @ RPM | 300 @ 2800 | 240 @ 2000* |

*1988 ratings. See your dealer for 1989 ratings. (A) Produced in U.S. and Canada.

FULL-SIZE BLAZER SPECIFICATIONS

| Series | 4-Wheel-Drive Gas | 4-Wheel-Drive Diesel |
|--------------------------------|-------------------------------------|---------------------------------|
| GVWR (lb.) | 6100 | 6250 |
| Engine — Liter (cu. in.) | 5.7L (350) V8 w/EFI | 6.2L (379) V8* |
| Transfer Case | Conventional NP 241 | Conventional NP 241 |
| Front Suspension — Spring Type | Hypoid Driving Axle/Leaf Spring | Hypoid Driving Axle/Leaf Spring |
| Axle Capacity (lb.) | 3600 | 3600 |
| Rear Suspension — Axle Type | Semi-Floating | Semi-Floating |
| Capacity (lb.) | 3750 | 3750 |
| Brakes — Disc/Drum | Power | Power |
| Steering — Type | Power | Power |
| Transmission — Std. — Opt. | 4-Speed Manual* 4-Speed Auto./OD | 4-Speed Auto./OD — |
| Front Hubs — Std. — Opt. | Manual Auto. Locking | Manual Auto. Locking |
| Tire Size — Tubeless | P235/75-15† | P235/75R-15† |

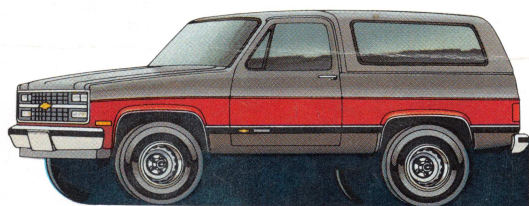
*Not available in California. †Larger size tubeless tires available.

EXTERIOR COLORS

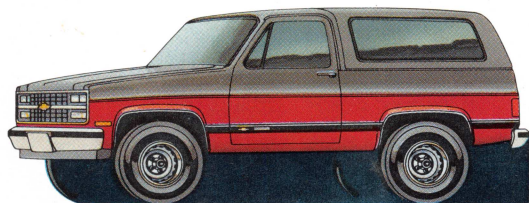


OPTIONAL TWO-TONES

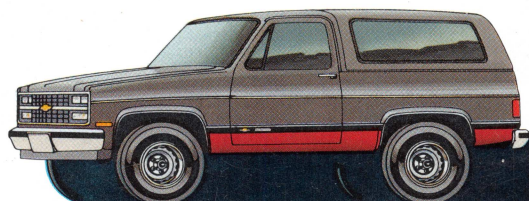
Color-keyed top is standard with Onyx Black, Midnight Blue Metallic, Sunset Gold Metallic, Gray Metallic, Mojave Beige and Summit White. See your Chevy truck dealer for full information on top color choices.



Special Two-Tone includes side and rear decals at body feature line, plus a hood ornament. Secondary color is below decal.



Conventional Two-Tone includes black vinyl body-side and rear moldings. Secondary color is below molding.



Deluxe Package includes moldings and side and rear decal striping, plus a hood ornament. Secondary color is applied between moldings and decal.

INTERIOR & EXTERIOR COLOR AVAILABILITY

| TRIM LEVEL Seat Type | INTERIOR COLORS | | | |
|--|-----------------|----------|--------|------------|
| | Dk. Blue | Burgundy | Saddle | Slate Gray |
| SCOTTSDALE | | | | |
| Custom Vinyl High-Back Bucket Seats | ■ | | ■ | |
| Custom Vinyl High-Back Reclining Bucket Seats | ■ | | ■ | |
| SILVERADO | | | | |
| Custom Vinyl High-Back Reclining Bucket Seats | ■ | ■ | ■ | ■ |
| Custom Cloth High-Back Reclining Bucket Seats | ■ | ■ | ■ | ■ |
| SOLID EXTERIOR COLORS Plus Conventional Two-Tone Combinations* | | | | |
| BEIGE, MOJAVE | | | | |
| Black, Onyx | | | ■ | |
| Blue, Midnight (Metallic) | | | ■ | |
| Gold, Sunset (Metallic) | | | ■ | |
| Wintergreen | | | ■ | |
| BLACK, ONYX | ■ | ■ | ■ | ■ |
| Beige, Mojave | | | ■ | |
| Gold, Sunset (Metallic) | | | ■ | |
| Gray (Metallic) | | ■ | | ■ |
| Quicksilver (Metallic) | | ■ | | ■ |
| Red, Fire | | | | ■ |
| White, Summit | ■ | ■ | ■ | ■ |
| BLUE, SMOKE (Metallic) | ■ | | | ■ |
| Blue, Midnight (Metallic) | ■ | | | ■ |
| Gray (Metallic) | ■ | | | ■ |
| White, Summit | ■ | | | ■ |
| BLUE, MIDNIGHT (Metallic) | ■ | | | ■ |
| Beige, Mojave | | | ■ | |
| Blue, Smoke (Metallic) | ■ | | | |
| Gold, Sunset | | | ■ | |
| Gray (Metallic) | ■ | | | ■ |
| Quicksilver (Metallic) | ■ | | | ■ |
| White, Summit | ■ | | | ■ |
| GOLD, SUNSET (Metallic) | | | ■ | |
| Beige, Mojave | | | ■ | |
| Black, Onyx | | | ■ | |
| Wintergreen | | | ■ | |
| GRAY (Metallic) | ■ | ■ | | ■ |
| Black, Onyx | | ■ | | ■ |
| Blue, Midnight (Metallic) | ■ | | | ■ |
| Red, Fire | | | | ■ |
| White, Summit | | ■ | | ■ |
| Wintergreen | | | | ■ |
| QUICKSILVER (Metallic) | ■ | ■ | ■ | ■ |
| Black, Onyx | | ■ | | ■ |
| Blue, Midnight (Metallic) | ■ | | | ■ |
| White, Summit | ■ | ■ | ■ | ■ |
| RED, FIRE | | | | ■ |
| Beige, Mojave | | | ■ | |
| Black, Onyx | | | | ■ |
| Gold, Sunset (Metallic) | | | ■ | |
| Gray (Metallic) | | | | ■ |
| White, Summit | | | | ■ |
| WHITE, SUMMIT | ■ | ■ | ■ | ■ |
| Beige, Mojave | | | ■ | |
| Black, Onyx | ■ | ■ | ■ | ■ |
| Blue, Smoke (Metallic) | ■ | | | |
| Gold, Sunset (Metallic) | | | ■ | |
| Gray (Metallic) | | ■ | | ■ |
| Quicksilver (Metallic) | ■ | | | ■ |
| Red, Fire | | | | ■ |
| WINTERGREEN | | | ■ | |
| Beige, Mojave | | | ■ | |
| Gold, Sunset (Metallic) | | | ■ | |

*See your Chevy dealer for information on Special and Deluxe Two-Tone combinations.

Important: A Word About This Catalog. We have tried to make this catalog as comprehensive and factual as possible. We reserve the right, however, to make changes at any time, without notice, in prices, colors, materials, equipment, specifications, models and availability. Since some information may have been updated since the time of printing, please check with your Chevrolet dealer for complete details, including details on the GM warranty which covers Chevrolets.

A Word About Engines. Chevrolets are equipped with engines produced by different operating units of GM, its subsidiaries or suppliers to GM worldwide.

A Word About Assembly of Chevrolets. Chevrolets are assembled by different operating units of General Motors, its subsidiaries or suppliers to GM worldwide. Chevrolets incorporate thousands of components produced by different operating units of GM, its subsidiaries or suppliers to GM worldwide. We sometimes find it necessary to produce Chevrolets with different or differently sourced components than originally scheduled. All such components have been approved for use in Chevrolets and will provide the quality performance associated with the Chevrolet name. Since some options may be unavailable when your vehicle is assembled, we suggest that you verify that your vehicle includes the equipment you ordered or, if there are changes, that they are acceptable to you.

A Word About Updated Service Information. Chevrolet regularly sends its dealers useful service bulletins about Chevrolet products. Chevrolet monitors product performance in the field. We then prepare bulletins for servicing our products better. Now you can get these bulletins, too. Ask your dealer. To get ordering information, call toll-free 1-800-551-4123.

GMAC Financing. At your Chevrolet dealer's, financing or leasing your new Chevy truck can be as easy as saying **GMAC**.

©1988 General Motors Corporation. All rights reserved.

**LET'S GET IT TOGETHER...
BUCKLE UP.**



LITHO IN U.S.A. 4836 7/88